

The most serious pollution issues to impact upon Australia's coastal and marine environments are poor water quality and poor sediment quality.

80% of all marine pollution comes from the land, and is a major threat to the health of marine systems.

Pollution includes marine debris, which ranges from plastic bags & ropes to unwanted white goods and car parts & bodies. These can all have serious detrimental effects on the marine environment.

Marine Mammals can become entangled

The Australian fishing industry is concerned about interactions with animals including seabirds, dolphins and sharks. Implemented mitigation methods successfully reduces and eliminates these interactions!

Industry initiatives include:

- *Pingers - Acoustic devices to alert mammals & divert them from the path of nets.*
- *Development of Codes of Practice to reduce interactions with mammals and threatened and endangered species.*



Birds and Fish can eat debris



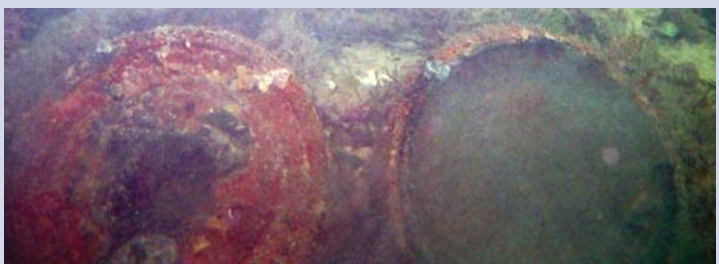
Industry initiatives include:

- *'No plastics on board'*
- *'Bins on board'*
- *Supporting 'stow it don't throw it'*
- *Australia's maritime garbage disposal laws.*

Alters Habitat Structures

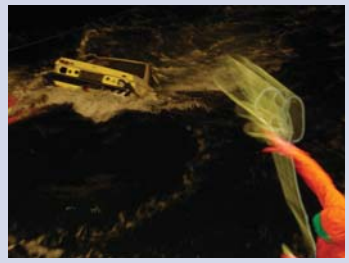
Introduced Marine Pests

Debris can provide a place for pest species to live, where they otherwise may not survive. Debris is not fixed to the sea floor, and can move around spreading marine pests, such as Caulerpa species, to new areas.



Creates Artificial Reefs

Many scientists believe the creation of artificial reefs threatens the long term sustainability of fish populations, as they relocate existing stocks to aggregate in an unnatural environment and make them more vulnerable to capture and less adaptable to natural ecosystems. The presence of debris creates an unsafe operating environment for fishers.



'Debris retrieved in trawl nets in Spencer Gulf'

Leaching of Toxins and Chemicals

Refrigerants, paints, engine oils etc...when dumped in the ocean untreated will leach chemicals into the water column which can affect water quality.



It is illegal to dump materials in the ocean without a permit under Commonwealth laws.

Dumping materials to create an artificial reef can result in a \$250,000 fine under the Environment Protection (Sea Dumping) Act 1981

Hazards of Dumping to Navigation

Officially endorsed artificial reefs are plotted on charts. Dumping materials creates a dangerous navigation hazard, as the location is not recognised on charts. Debris is not suitably attached to the substrate and can move around the seabed creating a dangerous environment for resource users.



'Isolated danger mark'



Commercial Fishers Fight Against Marine Debris

For More Information

Around Australia the seafood industry is dedicated to reducing waste and significantly reducing their contribution to marine debris.

Through:

- *Environmental Management Systems & Codes of Conduct*
- *Dedication to the outcomes and objectives of Natural Resource Management*
- *South Australia is leading the country with environmentally friendly, strapless bait boxes for industry.*

Do Your Part!

Contact your local Council to find out about your local waste disposal facilities and be sure to dispose of rubbish appropriately on land - 'stow it don't throw it'!



Worried about artificial reefs /debris in your local area?

Contact Transport SA Marine Safety Officers or the Environmental Protection Authority SA

envirofund
AUSTRALIAN Government

OCEANWATCH AUSTRALIA

SEA NET
SMARTER FISHING FOR INDUSTRY

COASTCARE

SAFIC
South Australian Fishing Industry Council

Natural Heritage Trust
Helping Communities Helping Australia
An Australian Government Initiative

PROJECT DOLPHIN SAFE

Adelaide Dolphin Sanctuary
www.projectdolphinsafe.com



Photos courtesy SeaNet, SAFIC, Adelaide Dolphin Sanctuary, Melbourne Zoo
'Front photograph courtesy of Ron Prendergast, Melbourne Zoo.'